

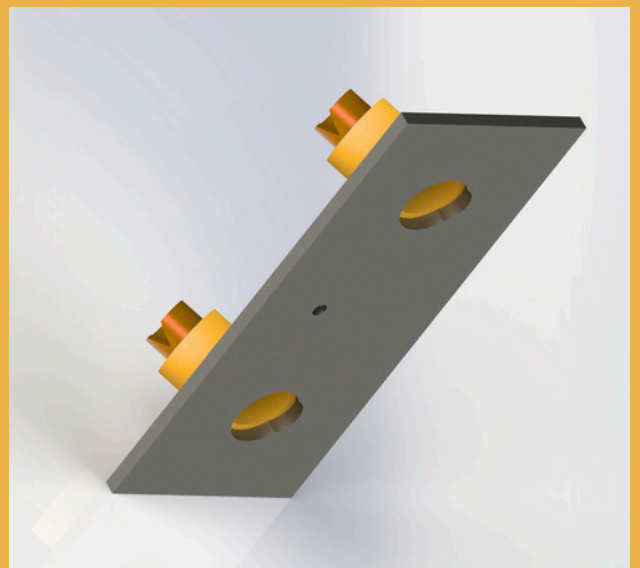
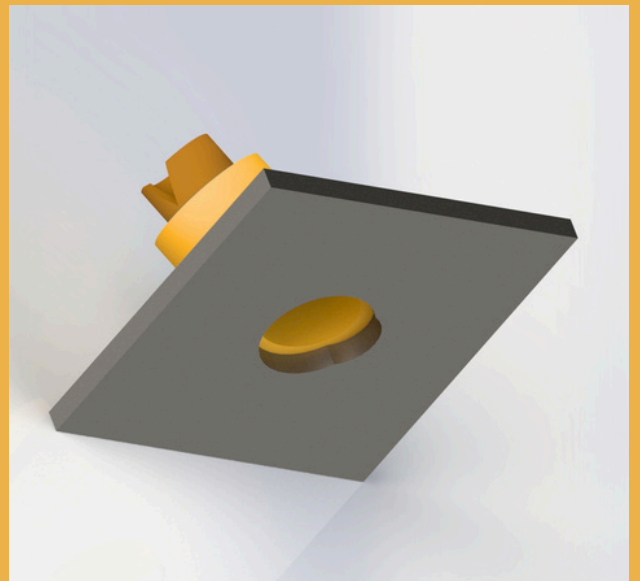
# TBR

## ENGINEERING

## NEW SILL ANCHOR PLATE (SAP) BRACKET – ENGINEERED FOR SUPERIOR WALL STABILITY

Formerly known as the Sill Plate Bracket, the Sill Anchor Plate (SAP) is now available in two optimized versions to meet diverse construction needs:

- SSAP (Single Sill Anchor Plate Bracket)
- DSAP (Double Sill Anchor Plate Bracket)





# TBR

## ENGINEERING

## WHICH SAP IS RIGHT FOR YOU?

### SSAP

- Ideal for continuous perimeter installation
- Spaced up to 5' on center under optimal wall conditions
- Minimum spacing 2.5' on center when walls bow or risk sliding
- Suitable for solid and concrete block walls (mount on the block's solid web section)



### DSAP

- All the benefits of SSAP, with double anchoring capacity
- Cuts concrete stress by half, offering an even higher factor of safety

Recommended where ultimate restraint is required or stresses exceed standard limits.





# TBR

## ENGINEERING

### WHY CHOOSE SAP?

- **Versatility**

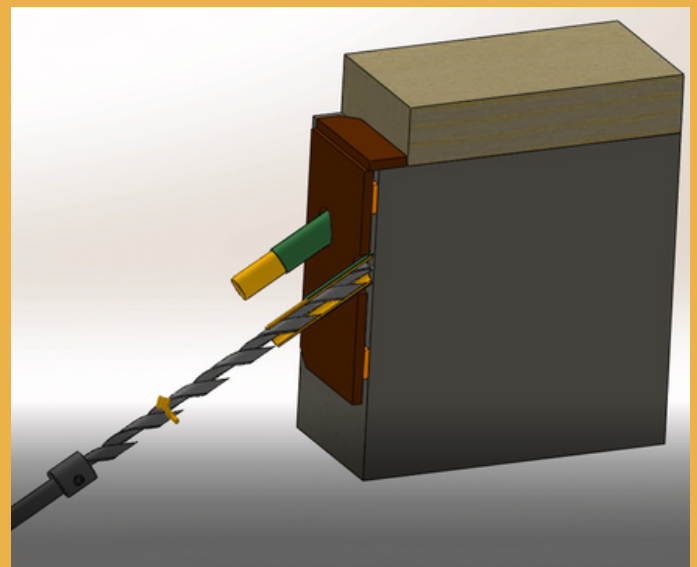
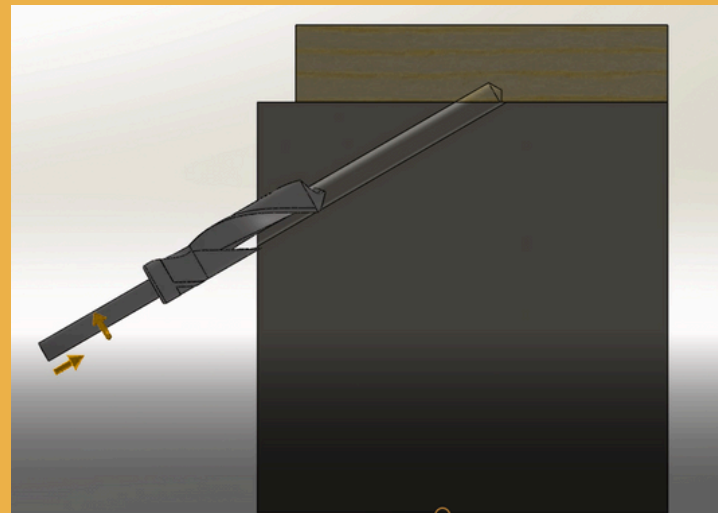
Works on a wide range of wall types—solid, block, bowing, or sliding.

- **Reliability**

Engineered spacing guidelines ensure optimal performance

- **Strength:**

Single or double anchoring to fit your project's demands

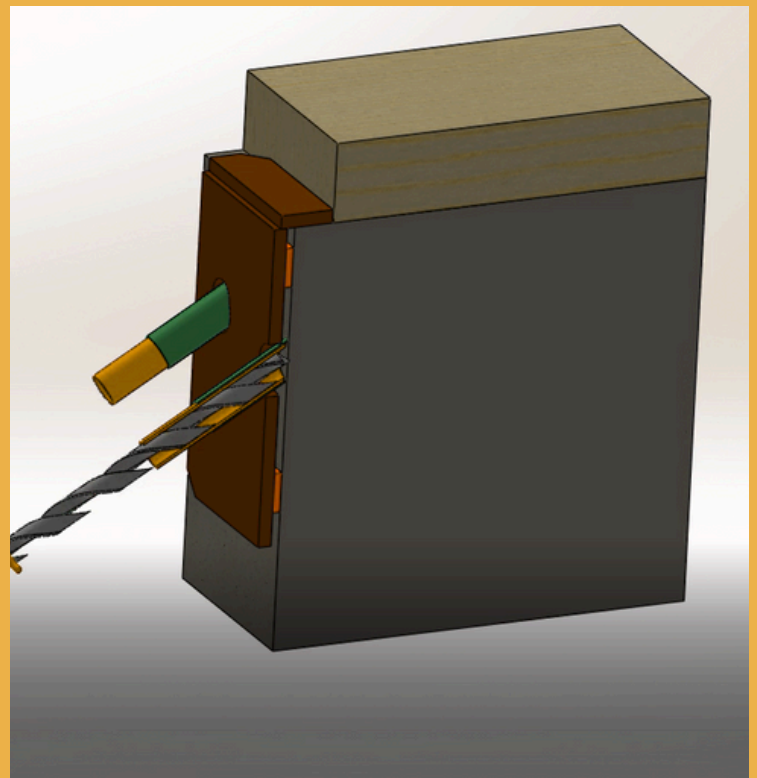
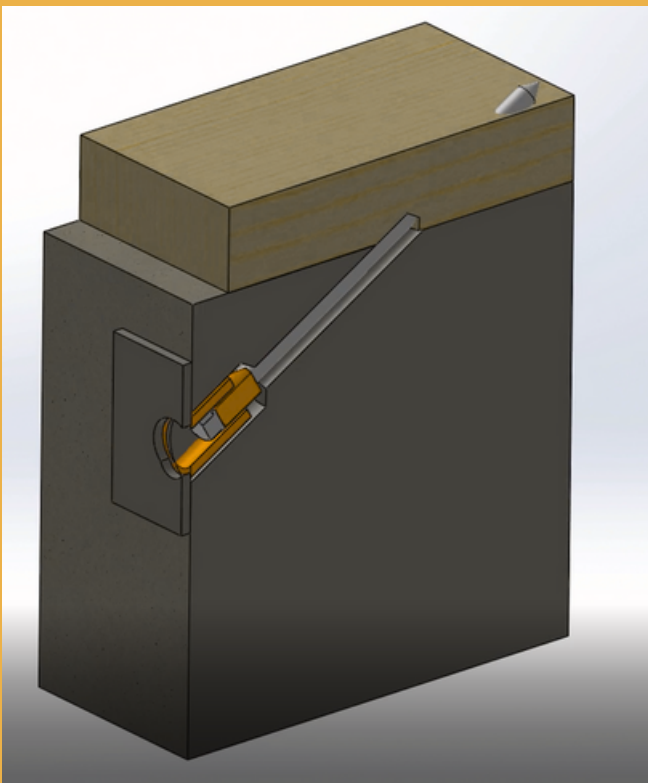




# TBR

## ENGINEERING

Equip your next build with the industry-leading Sill Anchor Plate bracket.



Contact us today! ☎ (419-464-9994)



Visit our website  
[tbrengineering.com](http://tbrengineering.com)